



# Online Only **PERSONAL PROPERTY** AUCTION

**Lots Start Closing: Thursday, November 14<sup>th</sup> @ 6pm**

**Preview: Thursday, November 14<sup>th</sup> • 4pm-5pm**

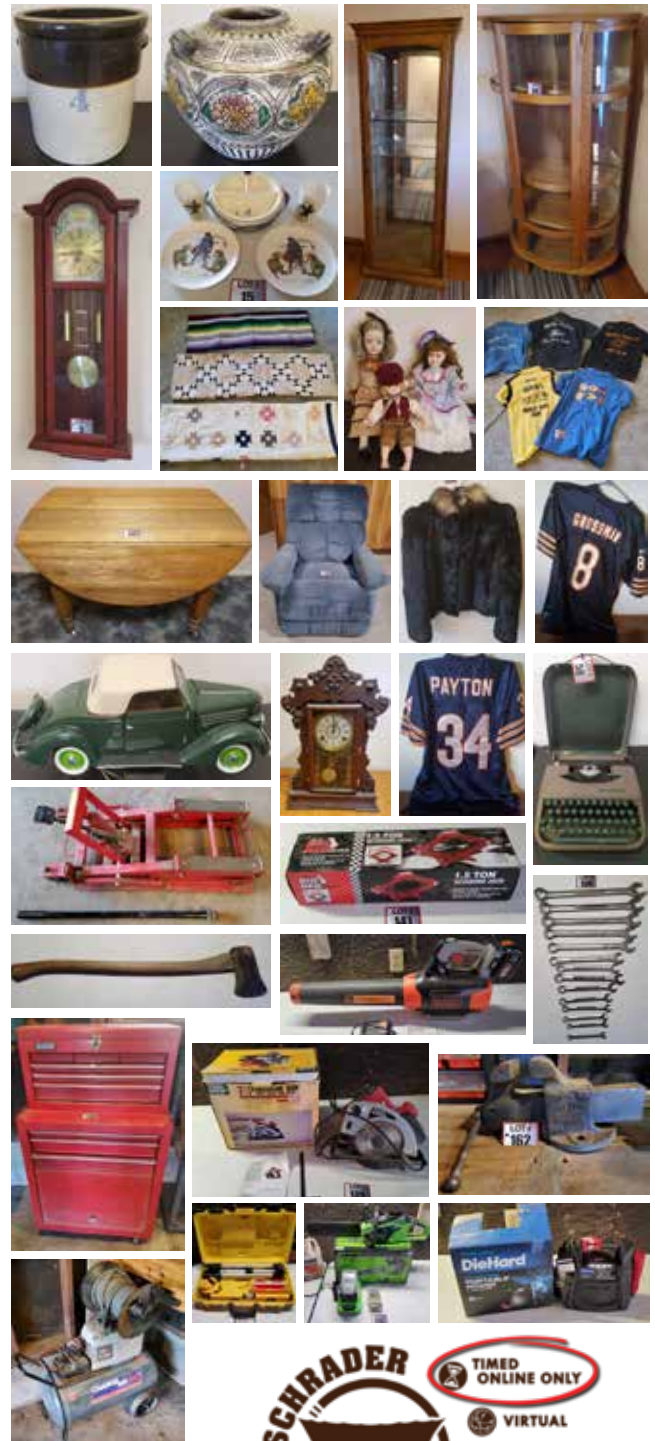
**Location: 2664 E 100 S, Columbia City, IN 46725**

**Directions:** 1.30 miles east of SR 205 on US 30 to CR 100 S turn left 1/2 mile to the home on the right or 14 miles west of I-69 in Fort Wayne on US 30, to CR 100 S turn right. (Follow Signs). **Absentee Bid Forms Available**

**Whitley County, IN • Columbia City**

## ANTIQUES/HOUSEHOLD COLLECTIBLES

• **4 Gallon Crock • Vintage Japan Pottery Urn/Vase • Lane Jewelry Box/Chest, Main Street Furniture Columbia City, IN • Bulova Westminster Chime Battery Operated Wall Clock • Furniture:** Black TV Cabinet, (2) Pc. Berkline Comfort Rest Sofa & Recliner, Leick End Table w/Drawer, Glass Front TV Stand, (2) Pc. Blue Chest of Drawers/Dresser w/Mirror, Green Desk & Chair, Coat Rack, (2) Pc. Vintage Chest of Drawers & Vanity, McCoy Desk & Office Chair, Curved Front Curio Cabinet, Glass Front/Side Curio Cabinet, Bookshelves, Oak Drop Leaf Table, Kitchen Table & 2 Chairs • **Cutco Knives • Small Kitchen Appliances/Cookware:** Hamilton Beach Roaster Chef 18 Qt. Roaster Oven, NuWave Infrared Oven, Pressure Pro Electric Pressure Cooker, 1970's Hamilton Beach the Crock Watcher, Rival Deep Fryers, Vintage Oster Imperial Touch-a-Matic Can Opener/Knife Sharpener, Rival Grind-O-Mat Model 303/1 & Universal Meat Grinder/Food Chopper, Anchor Hocking/Starfire Beverage Set, Fire King, Corning Ware Baking/Covered Dishes • Zippo, Ronson, JJJ/Japan Lighters, Briar/Unmarked Pipes & Cleaners • Zorro Walt Disney Melmac Children's Plates/Cups & Bartsch Mfg. Divided Baby Warming Plate • **Toy Cars:** 1936 Ford Franklin Mint Convertible, 1925 Model T/Danbury Mint, Mercedes-Benz 300SL Roadster, Metro City Fire Truck & Corvette • Tasco 7X35 Zip Focus & Bosch-Optikon Binoculars • **Vintage Sasson • Holiday Tweed & Samsonite Luggage Sets • Whitley County Indiana Throw • Wall Display Cases w/Swarovski Crystal Figurines • Vintage Pink Hanson Nursery Scale • Grossman #8 & Payton #34 Jersey's • Smith Corona Skyriter Typewriter • Men's & Woman's Clothing:** Vintage Sergio Valente Rabbit Fur Jacket/Coat, Woman's/Men's Hats & Blumenthal's Columbia City, Ind. Hat Box, Vintage Bowling Shirts • **Vintage Pole Light Floor Lamp • Antique Floral Hurricane Table Lamp • Kimball Swinger 700 Organ w/Bench & Sheet Music • Sewing Notions • Space Heaters • 2 Drawer Metal File Cabinet • Kodak Brownie Target & Keystone 8mm Movie Camera • Seth Thomas Mantle Clock • Orange Retro Chair • 20+ Collector Dolls & Figurines**



**800-451-2709 • SchraderAuction.com**



# Online Only **PERSONAL PROPERTY** AUCTION

## Lots Start Closing: Thursday, November 14<sup>th</sup> @ 6pm

Whitley County, IN • Columbia City

### SHOP/LAWN & GARDEN

- Greenworks 14" Cordless Chainsaw • Diehard Portable Power Jump Pack • Diehard 12 Volt Battery Charger • Big Red 1.5 Ton Scissor Jack • Craftsman Router & Router Table • B & D 60V Blower • Estway 16'6" Aluminum Ladder • Werner 8' Aluminum Step Ladder • Step Stool • Greystone Roll Around Tool Cabinet • Reed 108 1/2 Bench Vise • MasterForce 3/4 HP Bench Grinder • Panther King 1/4 hp Bench Grinder • DeVilbiss Air Pro 4HP 20 Gallon Air Compressor & Reel • Green Wood Industrial Parts Wall Cabinet • Corded/Battery Operated Tools: Tool Shop Circular Saw, Craftsman Rotary, Scroll Saw, Tool Shop Sander, Skil Combo, Craftsman Reciprocating Saw, B & D Drill • Bayco Extension Cord & Reel • 1/2" Drive Air Ratchet • Duracraft Impact Driver No. 2500 • Tool Shop Laser Level Kit • C-Clamps • Organizers • Crosman Target-finder Mod 410 Scope • Crescent & Pipe Wrenches • Chisels, Punches & MIT Wood Boring Set • Craftsman Open/Closed End Standard Wrenches • B & D Bulls Eye Laser Level Stud Finder • Plumb Axe • Weslo Cardio Glider Pro & Momentum CT 3.0 Exercisers • Outdoor Folding Chairs • Golf Clubs/Bags • Max Power Work Station • Huffy Sea Trails 3 Speed Ladies Bicycle • Shepherds Hooks • Outdoor Patio Swing • Trash Cans • Charcoal Grill • Schwinn Clairmont Bicycle • Larin 1500lbs ATV/Mower Jack • Huskee HZR350 Riding Mower Lift • Rugid & Craftsman Lawn Spreaders • Weed Eater Push Mower, 21" • Merry MAC Leaf Shredder/Chipper Model LSC • Huskee Premium Series 5HP Rear Tine Tiller • CountyLine 21 Gallon Tow Behind Sprayer • 36" & 4' Tow Behind Lawn Aerator • 42" Pull Behind Thatcher • Metal Lawn Cart

### ZERO TURN/RIDING MOWER/CYCLONE RAKE

- Simplicity Citation XT Zero Turn Mower, 61" Deck, Commercial Turf B & D 27.0 hp Motor, shows 312.6 Hrs, ROPS, Front/Rear Shocks, Model # 5901259, S/N 2017121827, Running/Mowing Condition, Stored Inside • Cyclone Rake, by Woodland Power Products, Z-10 Jetpath Vacuum System, B & S Vanguard 10 hp. Motor, Electric/Pull Start, Trailer Jack • Simplicity Broadmoor Riding Mower, 44" Deck, Hydro. 16 hp Kohler Command Motor, Shows 1133 Hrs, w/Simplicity 42" Snowblower & Rear Weights



**PAYMENT:** Payments may be made Online or Onsite in the forms of Cash, Check or Credit Card (3.0% surcharge applies) on **Friday, November 15<sup>th</sup> • 2pm-6pm.** Or by **Calling Main Office: Friday, November 15<sup>th</sup> • 8am-5pm • Onsite Payments: Friday, November 15<sup>th</sup> • 2pm-6pm • ALL Payments to be Made by 6pm Friday, November 15<sup>th</sup>! • 10 % Buyers Premium Applies. ••**

**LOAD OUT:** 1 Day Load Out!! **Friday, November 15<sup>th</sup> • 2pm-6pm.** Plan accordingly, Staff is limited/Come prepared/Auction Company does not provide boxes, packing, hand trucks or provide staff for loading of furniture & large items, Come prepared! **\*\*UPDATE\*\*** Any Items Paid For & Agreed Upon with Auction Manager (Due to The Volume of This Service, Delivery Charges Now Apply) to be taken to Main Office in Columbia City for Pickup are Required to be Picked Up Within 1 Business Week of Auction, **Deadline: Friday, November 22<sup>nd</sup>, 5PM.** No Exceptions, it is The Buyers Responsibility for Pick Up & Reminders Will Not Be Sent Out by Auction Company. Any Items NOT Picked Up Within The 1 Business Week Timeframe Will Be Returned to Seller & No Refunds Will Be Issued.

**SHIPPING:** Shipping is available through 3rd Party Shipper, Columbia City Goin Postal, 1080 Spartan Drive Suite A, Columbia City, IN 46725 • 260-248-8608, Call for Quote Prior to Bidding. ALL Shipping & Handling costs are the responsibility of the Buyer and said Shipping/Handling Is Between Buyer & Goin Postal, Not the Auction Company.

**SELLER: Pulley Estate**  
**AUCTION MANAGER: Phil Wolfe, 260-248-1191**

**800-451-2709**  
**SchraderAuction.com**

Phillip John Wolfe, AU19900139 • Schrader Real Estate and Auction Company, Inc., AC63001504

